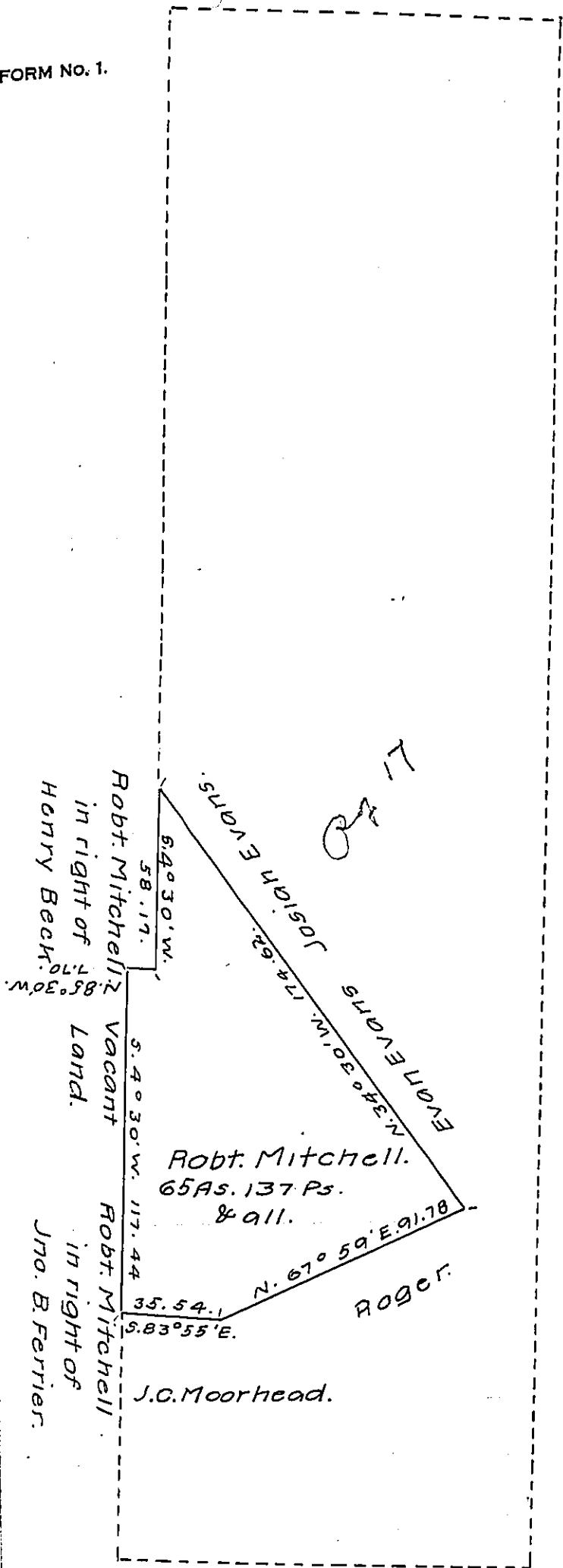


FORM No. 1.



A Draft of a tract of land situated in the Township of Brush-valley and County of Indiana, containing sixty-five acres, 137 perches and allowance of six percent. for roads, etc. Surveyed for Robert Mitchell the second day of May 1904, it being

part of a larger tract containing Four hundred and thirty nine acres, — perches and allowance, originally surveyed in pursuance of a warrant granted to James Wilson dated the twenty third day of June 1794.

D.L. Moorhead,

County surveyor.

to Isaac B. Brown, Esq.,
Secretary of Internal Affairs

IN TESTIMONY that the above is a copy of the original remaining on file in the Department of Internal Affairs of Pennsylvania, made conformably to an Act of Assembly approved the 16th day of February 1833, I have hereunto set my hand and caused the Seal of said Department to be affixed at Harrisburg, this twelfth day of August, 1907.

Henry Howell
Secretary of Internal Affairs.